

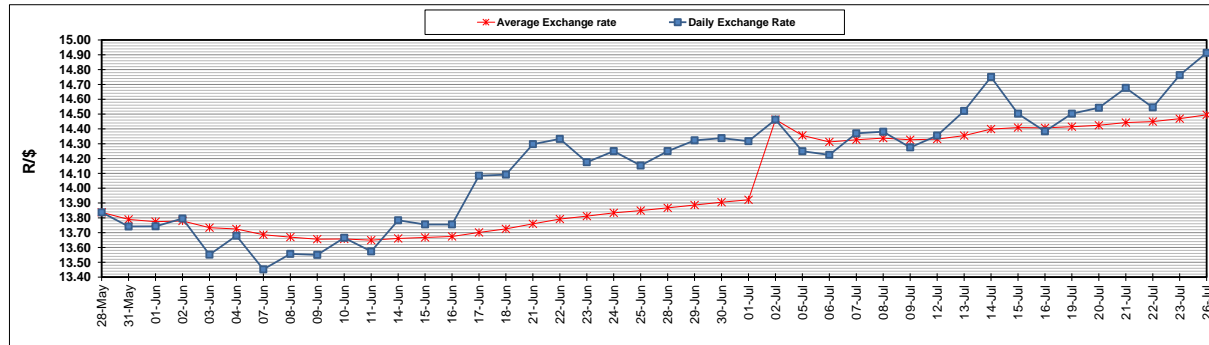
	PETROL 95 ULP	PETROL 93 ULP & LRP	DIESEL 0.05%	DIESEL 0.005%	ILL. PAR.
GAUTENG PUMP PRICE (SA c/l) AS FROM 07/07/2021	1,739.000	1,720.000	-	-	-
WHOLESALE PRICE (SA c/l) AS FROM 07/07/2021	-	-	1,508.620	1,512.020	913.488
SINGLE NATIONAL MAXIMUM RETAIL PRICE	-	-	-	-	1,150.000
BASIC FUEL PRICE - 26/07/2021 (SA c/l)	842.513	826.460	780.039	783.150	761.715
PRESS RELEASE CONTRIBUTION TO BFP 07/07/2021 - 26/07/2021 (SA c/l)	743.170	734.170	721.630	725.030	700.128
UNIT OVER/(UNDER) RECOVERY - 26/07/2021 (SA c/l)	(99.343)	(92.290)	(58.409)	(58.120)	(61.587)
AVERAGE BASIC FUEL PRICE 02/07/2021 - 26/07/2021	816.995	803.423	760.287	763.067	739.956
AVERAGE UNIT OVER/(UNDER) RECOVERY 02/07/2021 - 26/07/2021	(78.413)	(74.371)	(46.069)	(45.273)	(46.181)

ANALYSIS MOVEMENT OF AVERAGE OVER/(UNDER) RECOVERY

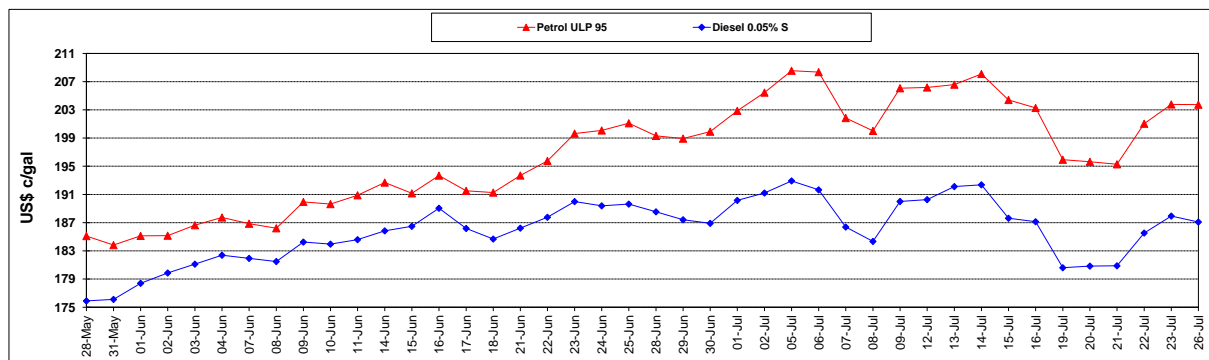
	PETROL 95	PETROL 93	DIESEL 0.05%	DIESEL 0.005%	ILL. PAR.
- MOVEMENT IN INTERNATIONAL PRODUCT PRICES	(46.105)	(42.600)	(16.004)	(15.097)	(16.920)
- MOVEMENT IN EXCHANGE RATE	(32.308)	(31.771)	(30.065)	(30.175)	(29.261)
AVERAGE UNIT OVER/(UNDER) RECOVERY 02/07/2021 - 26/07/2021	(78.413)	(74.371)	(46.069)	(45.273)	(46.181)

R/\$ EXCHANGE RATE - (R/\$14.9133- 26/07/2021)

EXCHANGE RATE USED IN BASIC FUEL PRICE



INTERNATIONAL PRODUCT PRICES OF BASKET USED IN BASIC FUEL PRICE



BASIC FUEL PRICE IN SA CENTS PER LITRE

